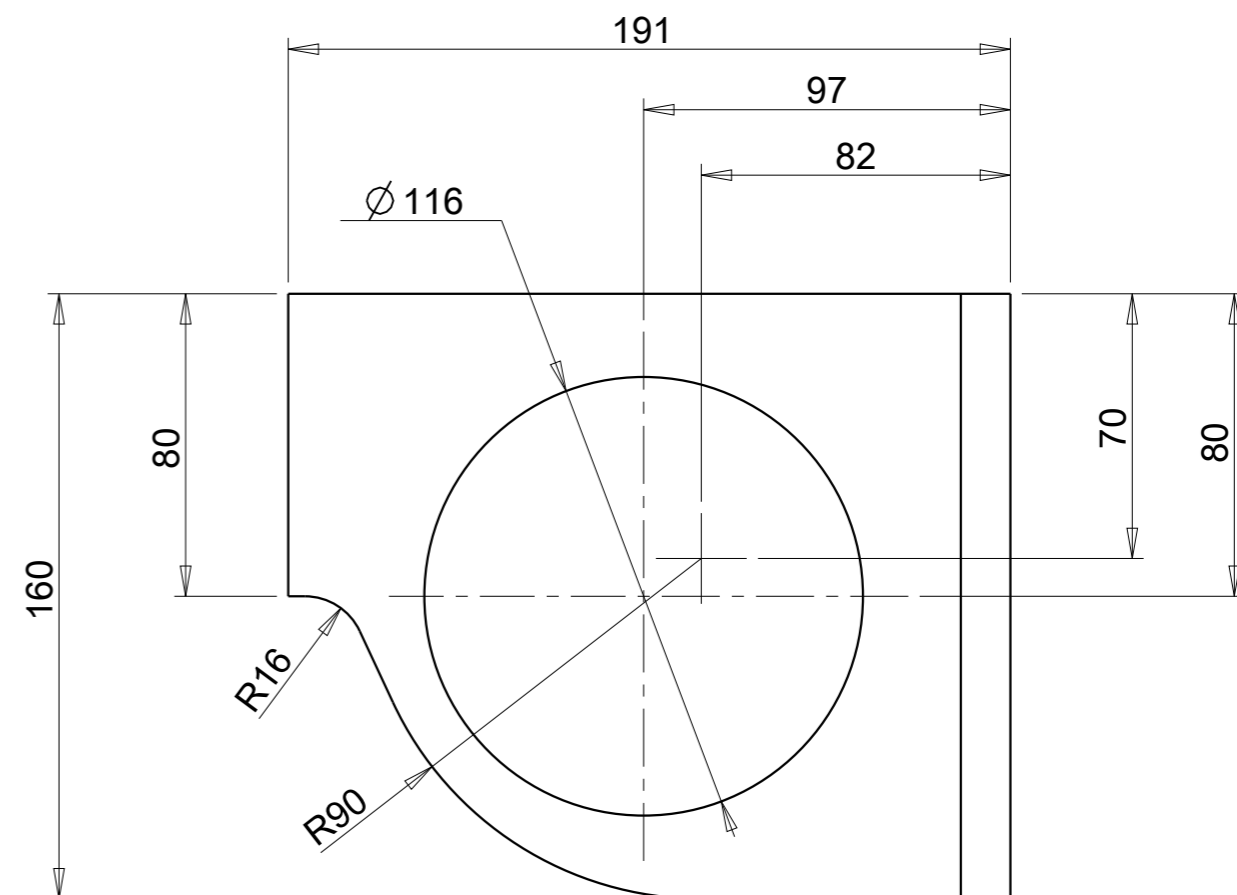



ISO 13920 Welded Construction			
	>20000	9,0	8,0
	<20000	8,0	7,0
	<16000	7,0	6,0
	<12000	6,0	5,0
	<8000	5,0	4,0
	<4000	4,0	3,0
	<2000	3,0	2,0
	<1000	2,0	1,5
	<400	1,0	1,0
	30-120	1,0	0,5
	2-30	1,0	0,5
	L mm	A ±	E ±
Nom. Size	Class		

Technical drawing symbols for surface texture and form tolerance. The top row shows two surface texture symbols: a left symbol with a vertical line and a horizontal line, labeled -0.3 , and a right symbol with a vertical line and a horizontal line, labeled $+0.3$. The bottom row shows two form tolerance symbols: a left symbol with a vertical line and a horizontal line, labeled $Ra\ 12.5$, and a right symbol with a vertical line and a horizontal line, labeled (\bigvee) .

STEEL SHEETS NOTES:
Thermal cutting - Classification of thermal cuts - Geometrical product specification and quality tolerances According to EN ISO 9013 - 231
Hot-rolled steel plates 3 mm thick or above - Tolerances on dimensions and shape According to EN10029 - B

Technical Specifications	-				
Technical Document	-				
Fixture/Mould Asset ID.	-				
Coating/Heat Tre./Roughness	-	1	UPDATED DRAWING	24/09/18	S.Ponzo
Paint/Color	-	Modf.No	Modification Description	Date	Sign



				S355J2 EN 10025		1.5
No	Parça Ad Designation Name of Item	Adet Qty.	Resim No / Norm Drawing No / Norm	Malzeme Material	Ölçü Dimension	Ağırlık Weight (Kg)
TYP	ISO 1302 ISO 8015 EN 22553		General Tol.	ISO 2768 f <input type="checkbox"/> m <input checked="" type="checkbox"/> H <input type="checkbox"/> K <input checked="" type="checkbox"/>		
	EN 15085-2 Certification Level CL1 <input type="checkbox"/> CL2 <input type="checkbox"/> CL3 <input type="checkbox"/> CL4 <input type="checkbox"/>		Weld Prod.	ISO 13920 A <input checked="" type="checkbox"/> B <input type="checkbox"/> E <input checked="" type="checkbox"/> F <input type="checkbox"/>		
			Cast Steel	ISO 12708 Lm2 <input type="checkbox"/> Lr2 <input type="checkbox"/> Sm2 <input type="checkbox"/> Sr2 <input type="checkbox"/>		
	Approved	P.FARINA		Scale	<div>TUVASAS</div> <div>Turkish Wagon Industry</div>	
	Checked	M.BORLO		1:2		
	Prepared	E.PINTUS				
		Plate		EM20.24.03.20009		
	Date:31/08/2018			Sheet:1/1	Size:A3	Rev:01